

Generator set data sheet



Model: C1100 D5B
Frequency: 50
Fuel type: Diesel

Spec sheet:	SS15-CPGK
Noise data sheet (open/enclosed):	MSP-2039
Airflow data sheet:	MCP-1039

Fuel consumption	Standby				Prime			
	kVA (kW)				kVA (kW)			
Ratings	1133 (906)				1029 (823)			
Load	1/4	1/2	3/4	Full	1/4	1/2	3/4	Full
US gph	25	33	44	59	17	30	43	55
L/hr	95	127	169	225	65	113	161	208

Engine	Standby Rating	Prime Rating
Engine manufacturer	Cummins	
Engine model	KTA38-G14	
Configuration	Cast iron, 60° V12 cylinder	
Aspiration	Turbocharged and after-cooled	
Gross engine power output, kWm	950	860
BMEP at set rated load, kPa	2055	1868
Bore, mm	159	
Stroke, mm	159	
Rated speed, rpm	1500	
Piston speed, m/s	7.9	
Compression ratio	13.9:1	
Lube oil capacity, L	161	
Overspeed limit, rpm	1850 ±50	
Regenerative power, kW	86	
Governor type	Electronic	
Starting voltage	24 Volts DC	

Fuel flow	
Maximum fuel flow, L/hr	428
Maximum fuel inlet restriction, mm Hg	203
Maximum fuel inlet temperature, °C	70

Air	Standby Rating	Prime Rating
Combustion air, m ³ /min	72.80	68.40
Maximum air cleaner restriction, kPa	6.2	

Exhaust

Exhaust gas flow at set rated load, m ³ /min	198.5	183.0
Exhaust gas temperature, °C	513	499
Maximum exhaust back pressure, kPa	10	

Standard set-mounted radiator cooling

Ambient design, °C	40	
Fan load, kW _m	20	
Coolant capacity (with radiator), L	275	
Cooling system air flow, m ³ /sec @ 12.7 mmH ₂ O	15	
Total heat rejection, Btu/min	33800	30680
Maximum cooling air flow static restriction mm H ₂ O	25.4	

Weights*

	Open	Enclosed
Unit dry weight kgs	7990	RTF
Unit wet weight kgs	8380	RTF

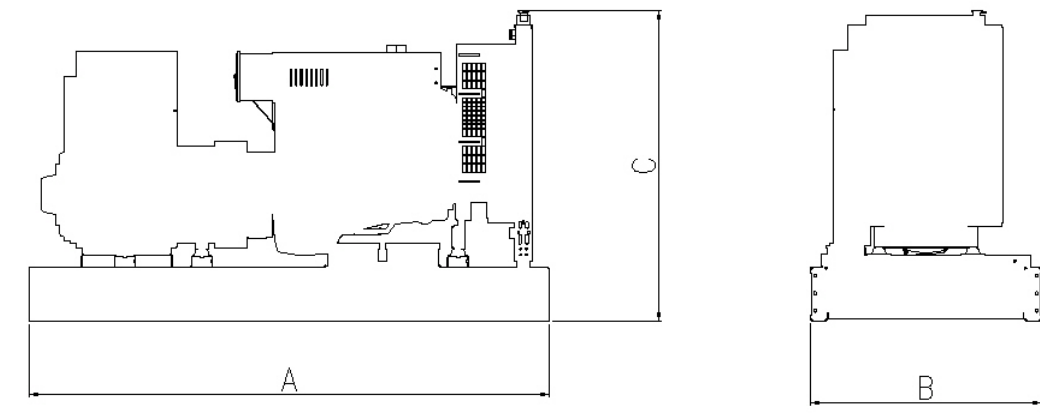
* Weights represent a set with standard features. See outline drawing for weights of other configurations.

Dimensions

	Length	Width	Height
Standard open set dimensions mm	4470	1785	2229
Enclosed set standard dimensions mm	RTF	RTF	RTF

Genset outline

Open set



Outlines are for illustrative purposes only. Please refer to the genset outline drawing for an exact representation of this model.

Alternator data

Connection	Temp rise °C	Duty	Alternator	Voltage
Wye, 3-phase	150/125 C	S/P	HC6K	380-480V

Ratings definitions

Emergency standby power (ESP):	Limited-time running power (LTP):	Prime power (PRP):	Base load (continuous) power (COP):
Applicable for supplying power to varying electrical load for the duration of power interruption of a reliable utility source. Emergency Standby Power (ESP) is in accordance with ISO 8528. Fuel Stop power in accordance with ISO 3046, AS 2789, DIN 6271 and BS 5514.	Applicable for supplying power to a constant electrical load for limited hours. Limited Time Running Power (LTP) is in accordance with ISO 8528.	Applicable for supplying power to varying electrical load for unlimited hours. Prime Power (PRP) is in accordance with ISO 8528. Ten percent overload capability is available in accordance with ISO 3046, AS 2789, DIN 6271 and BS 5514.	Applicable for supplying power continuously to a constant electrical load for unlimited hours. Continuous Power (COP) is in accordance with ISO 8528, ISO 3046, AS 2789, DIN 6271 and BS 5514.

Formulas for calculating full load currents:

Three phase output

$$\frac{\text{kW} \times 1000}{\text{Voltage} \times 1.73 \times 0.8}$$

Single phase output

$$\frac{\text{kW} \times \text{SinglePhaseFactor} \times 1000}{\text{Voltage}}$$



PRODUCT-DETAILS

T7S 1600 PR231/P LS/I In=1600A 3p F F

T7S 1600 PR231/P LS/I In=1600A 3p F F



General Information

Extended Product Type	T7S 1600 PR231/P LS/I In=1600A 3p F F
Product ID	1SDA062994R1
EAN	8015644655433
Catalog Description	T7S 1600 PR231/P LS/I In=1600A 3p F F
Long Description	C.BREAKER TMAX T7S 1600 FIXED THREE-POLE WITH FRONT TERMINALS AND LEVER OPERATING MECHANISM AND SOLID-STATE RELEASE IN AC PR231/P-LS/I R 1600

Ordering

EAN	8015644655433
Minimum Order Quantity	1 piece
Customs Tariff Number	85362090

Dimensions

Product Net Width	210 mm
Product Net Height	268 mm
Product Net Depth / Length	154 mm
Product Net Weight	13,614 kg

Container Information

Package Level 1 Units	1 piece
Package Level 1 Width	280 mm
Package Level 1 Height	350 mm
Package Level 1 Depth / Length	360 mm
Package Level 1 Gross Weight	11.2 kg
Package Level 1 EAN	8015644655433

Additional Information

Electrical Durability	2000 cycle 60 cycles per hour
Mechanical Durability	10000 cycle 60 cycles per hour
Number of Poles	3
Power Loss	at Rated Operating Conditions per Pole 77 W
Product Main Type	SACE Tmax T
Product Name	Moulded Case Circuit Breaker
Product Type	CB
Rated Current (I_n)	Main Circuit 1600 A
Rated Impulse Withstand Voltage (U_{imp})	8 kV
Rated Insulation Voltage (U_i)	1000 V
Rated Operational Voltage	690 V AC
Rated Service Short-Circuit Breaking Capacity (I_{cs})	(220 V AC) 85 kA (230 V AC) 85 kA (380 V AC) 50 kA (400 V AC) 50 kA (415 V AC) 50 kA (440 V AC) 50 kA (500 V AC) 40 kA (690 V AC) 30 kA
Rated Short-time Withstand Current (I_{cw})	for 1 s 20 kA
Rated Ultimate Short-Circuit Breaking Capacity (I_{cu})	(220 V AC) 85 kA (230 V AC) 85 kA (380 V AC) 50 kA (400 V AC) 50 kA (415 V AC) 50 kA (440 V AC) 50 kA (500 V AC) 40 kA (690 V AC) 30 kA
Rated Uninterrupted Current (I_u)	1600 A
Release Type	EL
Standards	IEC
Sub-type	T7
Suitable For	T7
Suitable for Product Class	Moulded Case Circuit Breakers
Terminal Connection Type	Fixed Circuit-Breakers Front
Version	F

Certificates and Declarations (Document Number)

Data Sheet, Technical Information	1SDC210015D0201
-----------------------------------	-----------------

Declaration of Conformity - CE	1SDL000165R0007
Environmental Information	1SDC210015D0201
GL Certificate	1SDL000163R0055
Instructions and Manuals	1SDC210015D0201
RoHS Information	1SDL000201R0001

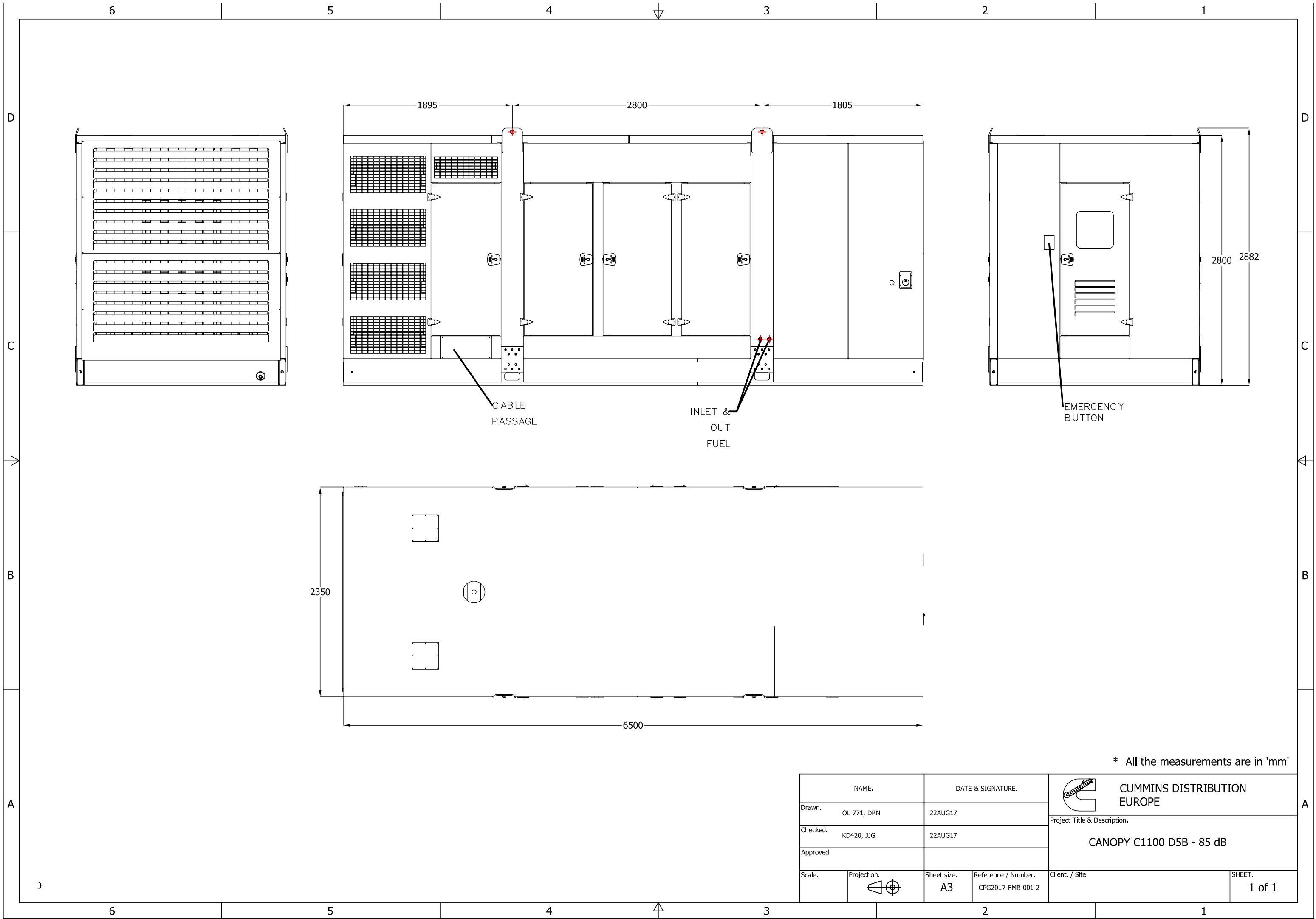
Classifications

ETIM 4	EC000228 - Power circuit-breaker for trafo/generator/installation prot.
ETIM 5	EC000228 - Power circuit-breaker for trafo/generator/installation prot.
ETIM 6	EC000228 - Power circuit-breaker for trafo/generator/installation prot.
ETIM 7	EC000228 - Power circuit-breaker for trafo/generator/installation protection
Object Classification Code	Q
UNSPSC	39121100
WEEE Category	5. Small Equipment (No External Dimension More Than 50 cm)


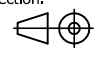
Categories

Low Voltage Products and Systems → Circuit Breakers → Moulded Case Circuit Breakers → Tmax T





* All the measurements are in 'mm'

NAME.		DATE & SIGNATURE.		 CUMMINS DISTRIBUTION EUROPE	
Drawn.	OL 771, DRN	22AUG17			
Checked.	KD420, JJG	22AUG17			
Approved.					
Scale.	Projection.	Sheet size.	Reference / Number.	Client. / Site.	SHEET.
		A3	CPG2017-FMR-001-2		1 of 1