

Generator set data sheet

Model: C150 D5B
Frequency: 50
Fuel type: Diesel

Spec sheet:	EA_T_CC_9_EN V1_1606
Noise data sheet (open/enclosed):	
Airflow data sheet:	
Derate data sheet (open/enclosed):	
Transient data sheet:	

Fuel consumption	Standby				Prime			
	kVA (kW)				kVA (kW)			
	(150)				(138)			
Ratings	1/4	1/2	3/4	Full	1/4	1/2	3/4	Full
Load								
gph	1.98	3.96	5.83	8.14	1.76	3.74	5.28	7.04
L/hr	9	18	26.5	37	8	17	24	32
Engine power (kw)	35	70	105	140	30.5	61	91.5	126

Engine	Standby rating	Prime rating
Engine manufacturer	Dofeng Cummins Engine Co.,LTD	
Engine model	6BTAA5.9-G15	
Configuration	4-cycle, In-line, 6-cylinder,	
Aspiration	Turbocharged & Charge Air Cooled	
Gross engine power output, kWm	160	145
Bore, mm	102	
Stroke, mm	120	
Rated speed, rpm	1500	
Piston speed, m/s	6	
Compression ratio	17.3 :1	
Lube oil capacity, L	16.4	
Overspeed limit, rpm	1800	
Regenerative power, kW	NA	
Governor type	Electronic	
Starting voltage	24V	

Fuel flow

Maximum fuel flow, L/hr	42
Maximum fuel inlet restriction, mm Hg	101 / 203 (clean / dirty filter)
Maximum fuel inlet temperature, °C	

Air	Standby rating	Prime rating
Combustion air, m3/min	10.56	9.78
Maximum air cleaner restriction, kPa	3.7 (clean element) 6.2 (dirty element)	

Exhaust

Exhaust gas temperature, °C	556	536
Maximum exhaust back pressure, kPa	10	

Standard set-mounted radiator cooling

Ambient design, °C	50	
Fan load, kWm	4.6	
Coolant capacity (with radiator), L	35.9L	
Cooling system air flow, m3/sec @ 12.7 mm H ₂ O	4.3 (open)	3.06(enclosed)
Total heat rejection, Btu/min	5390	
Maximum cooling air flow static restriction mm H ₂ O	125kpa (open)	185kpa (enclosed)

Weights*

	Open	Enclosed
Unit dry weight kgs	1465	2137
Unit wet weight kgs	1504	2176

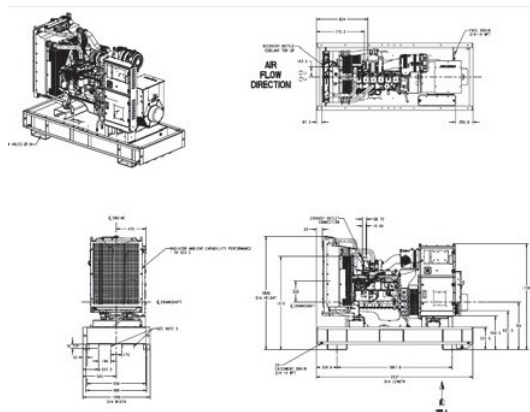
* Weights represent a set with standard features. See outline drawing for weights of other configurations.

Dimensions

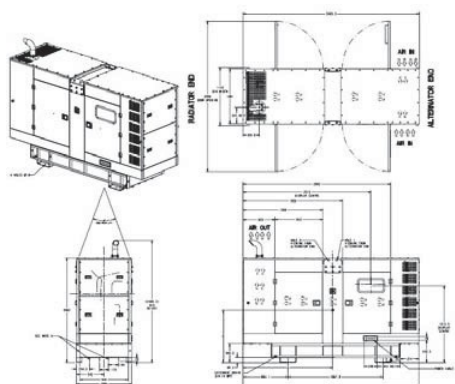
	Length(mm)	Width(mm)	Height(mm)
Standard open set dimensions	2537	1090	1846
Standard enclosed set dimensions	3460	1084	2386

Genset outline

Open set



Enclosed set



Outlines are for illustrative purposes only. Please refer to the genset outline drawing for an exact representation of this model.

Alternator data

Connection ¹	Temp rise °C	Duty ²	Alternator	Voltage
WYE	163	ESP	UCI274E	190-208 & 380 - 416 V

Ratings definitions

Emergency standby power (ESP):	Limited-time running power (LTP):	Prime power (PRP):	Base load (continuous) power (COP):
Applicable for supplying power to varying electrical load for the duration of power interruption of a reliable utility source. Emergency Standby Power (ESP) is in accordance with ISO 8528. Fuel Stop power in accordance with ISO 3046, AS 2789, DIN 6271 and BS 5514.	Applicable for supplying power to a constant electrical load for limited hours. Limited Time Running Power (LTP) is in accordance with ISO 8528.	Applicable for supplying power to varying electrical load for unlimited hours. Prime Power (PRP) is in accordance with ISO 8528. Ten percent overload capability is available in accordance with ISO 3046, AS 2789, DIN 6271 and BS 5514.	Applicable for supplying power continuously to a constant electrical load for unlimited hours. Continuous Power (COP) is in accordance with ISO 8528, ISO 3046, AS 2789, DIN 6271 and BS 5514.

Formulas for calculating full load currents:

Three phase output

$$\frac{\text{kW} \times 1000}{\text{Voltage} \times 1.73 \times 0.8}$$

Single phase output

$$\frac{\text{kW} \times \text{SinglePhaseFactor} \times 1000}{\text{Voltage}}$$

For More Information

Power Generation China
 2 Rongchang East Street, Beijing Economic-Technological Development Area, 100176 P.
 R. China
 Tel: 86(10) 59023000
 Fax: 86(10) 59023199
 Email: EastAsia.CumminsPower@Cummins.com
 Cummins China Service Hotline: 400-810-5252

Our energy working for you.™

©2016 Cummins Power Generation Inc. All rights reserved.
 Cummins Power Generation and Cummins are registered trademarks of Cummins Inc. PowerCommand, AmpSentry, InPower and "Our energy working for you." are trademarks of Cummins Power Generation. Other company, product, or service names may be trademarks or service marks of others. Specifications are subject to change without notice.
 EA_S_CC_49_EN V1_1606

